



## **Profitable even for small quantities.**

### **Our WALLTEQ M-120.**

The multifunction bridge WALLTEQ M-120 allows to process wall elements, roof elements, floor or gable elements at highest precision. The wide range of applications enables to produce a wide variety of wall structures and materials quickly and easily – all this at an excellent price-performance ratio.

#### **Your benefits at a glance**

##### **Ideal entry into CNC-controlled production**

Entry-level solution with extremely very low acquisition costs for small and medium sized carpentries

##### **Constant high quality**

Precise processing through state-of-the-art CNC technology

##### **Easily integrable in production halls**

Less space requirement – production of elements up to 12 m requiring only 90 m<sup>2</sup> of production area

##### **Production in batch size 1**

Flexible production of various elements without changeover times

# Ideal for use in timber construction

## Fully automatic processing of the sheathing with routing unit



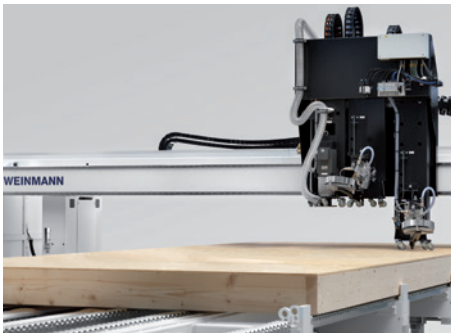
Formatting outer edges



Interpolating routing processing

- Manufacturing of window, door and socket cut-outs
- Tracking of and compensation for thickness variations in the element with scanning routing unit
- Fully interpolating routing of free-formed pieces such as circles, curves or straight cuts

## Fully automatic fastening of sheathings by two different staple or nailing devices



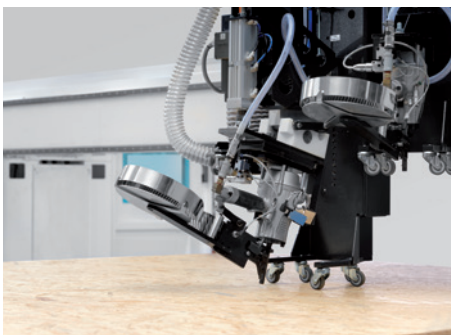
Fastening of sheathing



Useable for different materials and wall constructions

- Automatic fastening of sheathings
- Two chucks for different clamping and nailing devices
- Fastening units can drive in X- and Y-direction. This enables the attachment for example of gable inclinations in various angles.
- Ensures static equilibrium by guaranteeing the correct border and attachment clearances

## Optional features



### Swiveling chuck for nailing devices

Horizontal swiveling for example in the case of narrow studs or 2" x 4" construction method.



### Piggyback suction device

Minimizes the amount of dust. A dust extraction supplied by the customer is also possible.



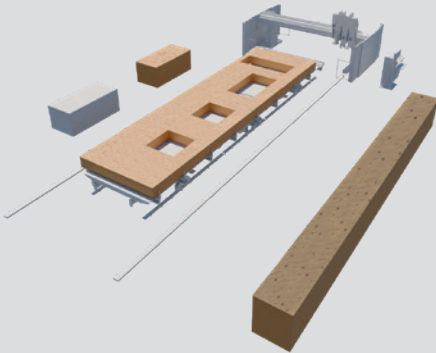
### Fast data entry directly at the machine with easyRUN

completely without CAD. Fully automatic data transfer from the CAD is possible, too.

**"We work to a high level of quality and our production is about 30 percent faster than manual production, even with the same number of employees." Christoph Bächle, Abbundzentrum St. Johann**

## State-of-the-art technology for your production

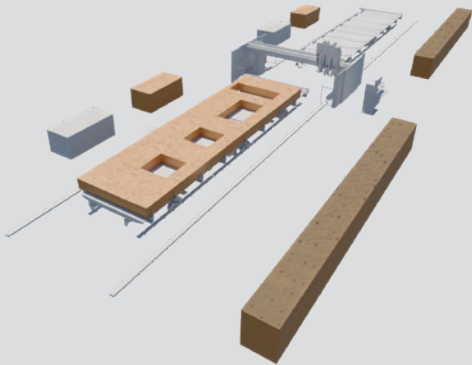
Depending on the performance and product range required, different versions are available to suit your requirements.



### BASIC EDITION:

#### WALLTEQ M-120 with a single working table

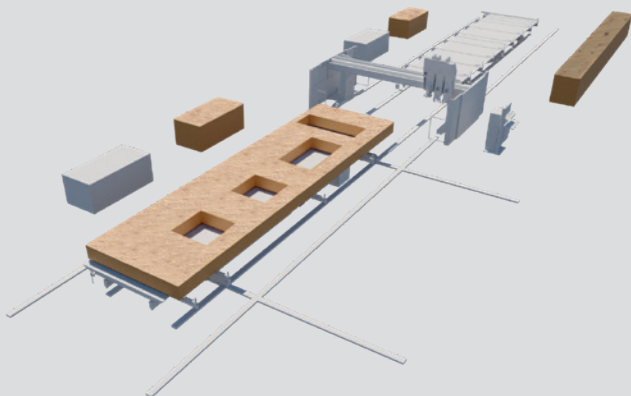
- Can be combined with various working tables, for example self assembly table, carpentry table or already existing working tables
- Optimized working process because of ergonomic working methods and better logistic processes
- Capacity: 20 houses / year (for approx. 650 m<sup>2</sup> of panel)



### ADVANCED EDITION:

#### WALLTEQ M-120 with two working tables

- Can be combined with various working tables, for example self assembly table, carpentry table or already existing working tables
- High productivity due to parallel working on both tables: Production of the frame work on table 1, insertion of installation and closing of the element on table 2
- Capacity: 30 houses / year (for approx. 650 m<sup>2</sup> of panel)



### PROFESSIONAL EDITION:

#### WALLTEQ M-120 with butterfly turning table

- Multifunction bridge combined with butterfly turning table
- Safe and fast turning of the elements within just 90 seconds
- High productivity due to parallel working, automated turning and optimized working processes
- Capacity: 35 houses / year (for approx. 650 m<sup>2</sup> of panel)

SPACE REQUIREMENT AND TECHNICAL DATA	BASIC EDITION	ADVANCED EDITION	PROFESSIONAL EDITION
width (m)	6.50	6.50	6.50 (during turning process 9 m)
length for 6 m elements (m)	12	19	19
length for 8 m elements (m)	14	23	23
length for 10 m elements (m)	16	27	27
length for 12 m elements (m)	18	31	31
power requirements (kW) WALLTEQ M-120	18	18	18
power requirements (kW) BUILDTEQ	due to machine typ	due to machine typ	16
compressed air requirements (NI/min)	1500	1500	1500

## ELEMENT DIMENSIONS

max. width (mm)	3,600
min. height (mm)	75
max. height (mm)	500
length (m)	customized